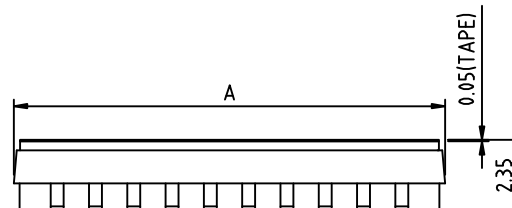
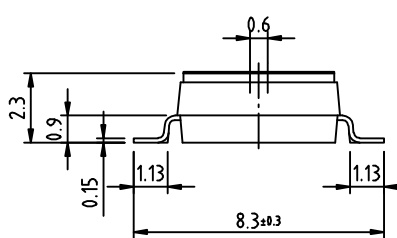
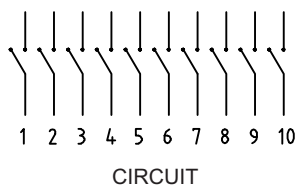
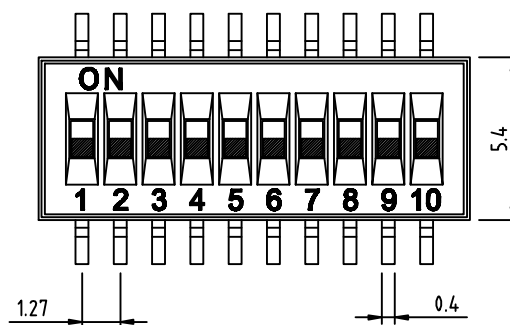
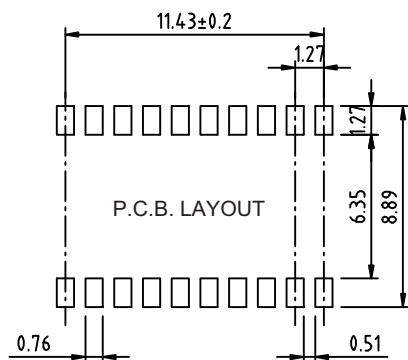
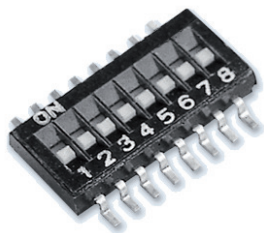


DIP Switches

SMT Half Pitch Dip Switch

DX276 Series



No. of positions	Dimension A (mm)
2	4.14
4	6.68
6	9.22
8	11.76
10	14.30

SPECIFICATIONS:

- > Rating: 0.1A 50VDC (Non-Switching)
0,025A 24VDC, 0,01A 50VDC (Switching)
- > Contact Resistance: 50 mohm Max. (initial)
100 mohm Max. (after life)
- > Insulation Resistance: 200 Mohm Min. at 100VDC
- > Dielectric Strength: 300VAC Min. Min.
- > Capacitance: 5pF 1MHz
- > Operating Temperature: -40°C ~ +85°C
- > Operating Force: 800gf Max.
- > Operating Life: 2,000 Cycles (No Load)
1,000 Cycles (Load)

MATERIALS:

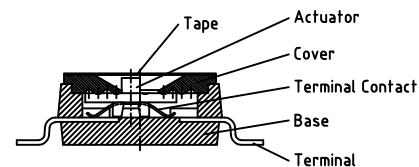
- > Cover: PPS Thermoplastic UL94V-0 black
- > Base: PPS Thermoplastic UL94V-0 black
- > Actuator: PPS Thermoplastic UL94V-0 white
- > Contact: Copper alloy with Gold plated
- > Terminals: Copper alloy with Gold or Tin plated
- > Tape: Polyimide amber

REFLOW SOLDERING:

- > Soldering Conditions: Peak Temperature 270°C Max. 10 Seconds Max.

PACKAGING:

- > Packaging Type: Tape and Reel Packaging



HOW TO ORDER:

DX276

1 TYPE OF TERMINALS:

S SMT Terminals

3 ACTUATOR :

RN Recessed Actuator Without Tape Sealed
RT Recessed Actuator With Tape Sealed

5 GOLD PLATING:

04 Gold 4 μ" Min.
10 Gold 10 μ" Min.
12 Gold 12 μ" Min.
20 Gold 20 μ" Min.
30 Gold 30 μ" Min.

6 PLATING MATERIAL:

UU Contact Gold Plated;
Terminals Gold Plated
UT Contact Gold Plated;
Terminals Tin Plated

2 NO. OF POSITIONS:

02 2 Positions
04 4 Positions
06 6 Positions
08 8 Positions
10 10 Positions

4 ACTUATOR POSITION:

F In OFF-Position (Standard)
N In ON-Position

7 PACKAGE STYLE:

TB Tube
TR Tape & Reel