

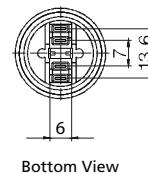
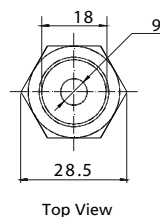
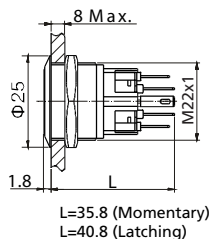
Pushbutton Switches

Anti-Vandal Pushbutton Switch - Mounting Hole Ø22mm

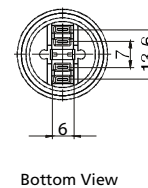
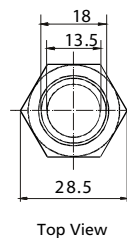
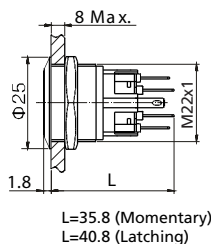
PAV22 Series



PAV22S...1... Dot illuminated; 1NO1NC



PAV22S...2... Ring illuminated; 1NO1NC



LAMP RATINGS

Lamp Type	LED Lamp AC/DC *			Lamp Circuit Diagram
	AC/DC6V	AC/DC12V	AC/DC110V	
Rated Voltage	AC/DC24V	AC/DC36V	AC/DC220V	<p>Using AC/DC LED lamp, the terminals have not difference of anode and cathode; Using inner resistance, don't need to connect outer resistance. (PAV16 Series have no inner resistance).</p>
Rated Amper	about 15mA		about 5mA	
LED Colors	red, green, yellow, orange, blue, white			
Life	40,000 hours (reference)			

* DC LED and other voltages can be made by request.

SWITCHING

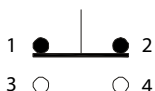
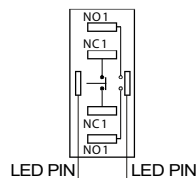


DIAGRAM OF TERMINATION



The second and third switch unit are the same.

How to order:

PAV22

1 CONTACT:

S 1NO1NC

2 OPERATING MODE:

M Momentary

L Latching

3 TERMINATION:

S Solder Lug 2.8x0.5mm

4 ILLUMINATION:

0 No Illumination

1 Dot Type Illumination

2 Ring Type Illumination

5 LED COLOR:

N No Illumination

C Red F Green E Yellow

D Orange G Blue B White

6 LED VOLTAGE:

0 No Illumination

6 AC/DC 6V

12 AC/DC 12V

24 AC/DC 24V

110 AC/DC 110V

220 AC/DC 220V

(Other Voltage can be made by request)

7 ENGRAVING:

A Stop B Start C Return D Reset

E | F || G ◀ H ↑

J ■ K ⏻ L ⚡ M ⏻

N ○ (Other engraving can be made by request)

Specifications:

CHARACTERISTICS

- > Protection Degree: IP65 (for surface of the panel)
- > Anti Vandal Degree: IK10
- > Front Shape: Flat round
- > Switch Rating: 5A 250VAC Max.
- > Contact Resistance: 50mΩ Max.
- > Insulation Resistance: 1000MΩ Min.
- > Dielectric Intensity: 2000VAC
- > Operating Temperature: -20°C to +55°C
- > Mechanical Life: 1,000,000 cycles
- > Electrical Life: 50,000 cycles
- > Panel Thickness: 1 to 8 mm
- > Torque: 5 to 14 Nm
- > Operation Pressure: about 5.5 N
- > Operation Distance: about 2.5mm

MATERIAL

- > Contact: Silver alloy
- > Button: Stainless steel
- > Body: Stainless steel
- > Base: PA