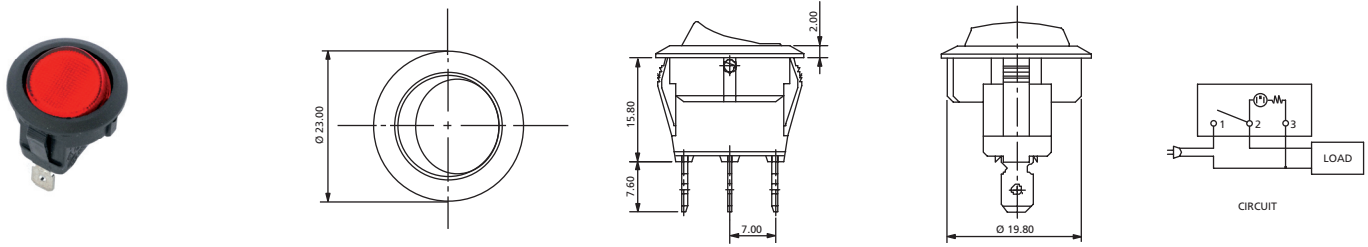


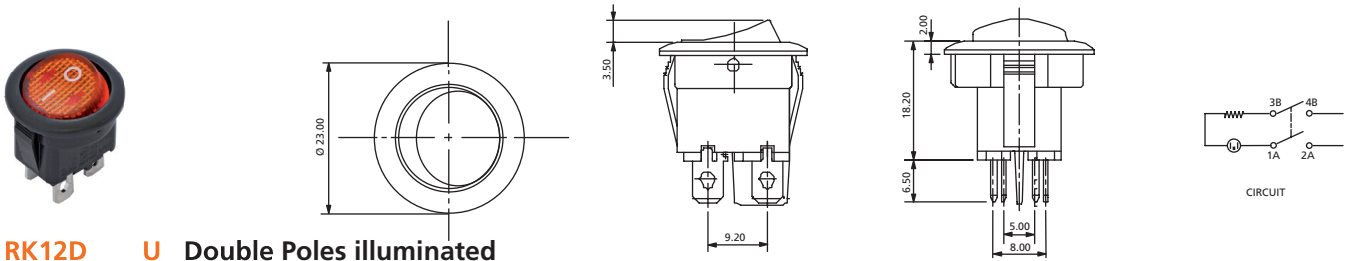
Rocker Switches

Ø23 mm Round illuminated Rocker Switches

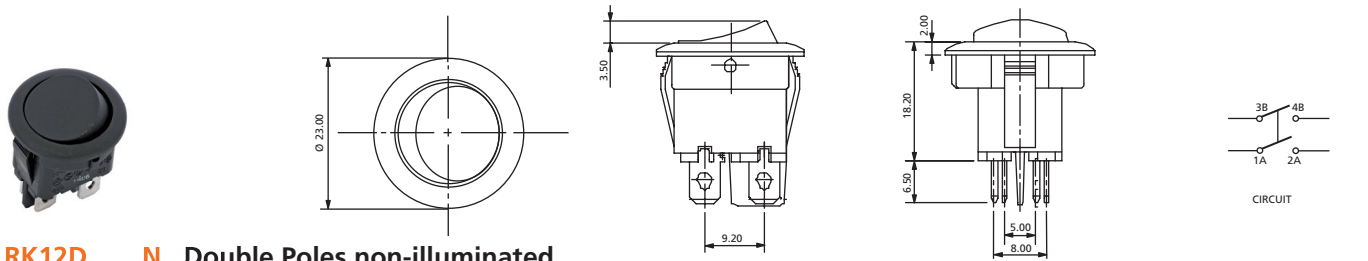
RK12 Series



RK12S Single Pole




RK12D_U Double Poles illuminated

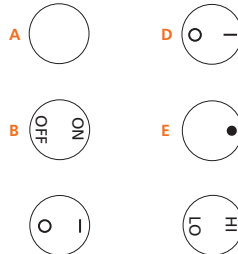


RK12D_N Double Poles non-illuminated

TERMINAL

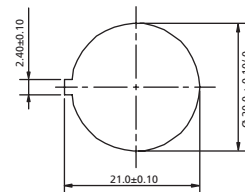
-  **Q** 4.8mm TAB, 0.8mm Thick
-  **D1** Solder Tag Type 1
-  **D2** Solder Tag Type 2
-  **D3** Solder Tag Type 3
-  **H** Thru Hole Straight

ACTUATOR SHAPE



PANEL SIZE

PANEL CUT-OUT
Snap-in mounting



How to order:

RK12 1 2 3 4 5 6 7

- | | |
|---|--|
| <p>1 POLES:
 S Single Pole
 D Double Poles</p> <p>2 SWITCHING:
 1 ON - OFF
 2 ON - ON (RK12S Only)</p> <p>3 TERMINAL
 Q (See above drawings):
 D1 Quick Connect
 D2 Solder Tag Type 1
 D3 Solder Tag Type 2
 H Solder Tag Type 3
 H Thru Hole Straight</p> <p>4 ACTUATOR MARKING:
 A See above drawings
 B See above drawings
 C See above drawings
 D See above drawings
 E See above drawings
 F See above drawings</p> | <p>5 ILLUMINATION:
 N No Illuminated (Standard)
 T No Illuminated with transparent Rocker
 U Illuminated</p> <p>6 BASE COLOR:
 A Black
 H Grey
 B White</p> <p>7 ACTUATOR COLOR:
 A Black
 H Grey
 B White
 C Red
 F Green
 D Orange
 G Blue (RK12S Only)
 E Yellow (RK12D Only)</p> |
|---|--|

General Specifications:

FEATURES

- » Round rocker switch
- » Single pole or double pole
- » Illuminated or non-illuminated

MATERIALS of RK12S

- » Contact Arm (RK12S): Silver plated copper alloy
- » Movable Contact Arm (RK12D): Phosphorus bronze
- » Movable Contact (RK12D): Silver alloy
- » Terminals: Silver plated copper
- » Lamp: Neon for AC, Tungsten bulb for DC
- » Spring: Piano wire

MECHANICAL

- » Temperature Range: -20°C to +125°C

ELECTRICAL

- » Electrical Life: 10,000 cycles
- » Rating (RK12S): 20A125VAC, 12A250VAC
 10A125VAC / 6A250VAC
 6A125VAC / 3A250VAC
 6A250VAC
 10(4)A250VAC-T125
- » Rating (RK12D): 12A125VAC, 10A250VAC
 10A125VAC / 8A250VAC
 10A250VAC
 10(4)A250V-T125/55
- » Initial Contact Resistance: 20mΩ max.
- » Insulation Resistance: 100MΩ min. at 500VDC