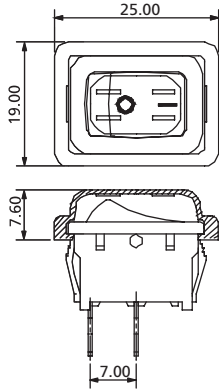


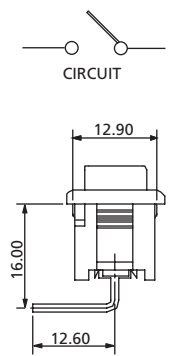
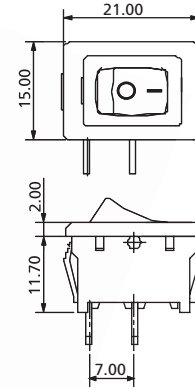
# Rocker Switches

## 21 x 15 mm SP Rocker Switches

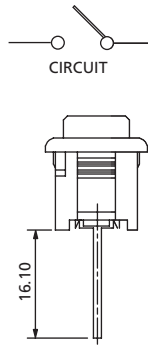
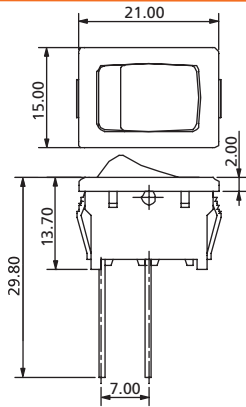
## RK4 Series



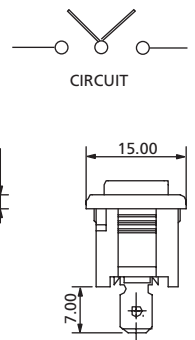
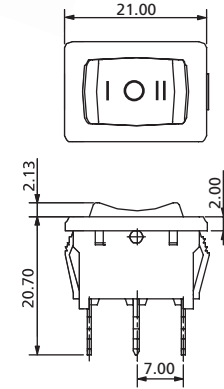
RK4S1Q4D



RK4S1R4D\_N



RK4S1H4A\_N



RK4S3Q4G\_N

### TERMINAL

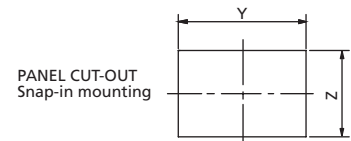
- Q** 4.8mm TAB, 0.8mm Thick
- D1** Solder Tag Type 1
- D2** Solder Tag Type 2
- D3** Solder Tag Type 3

- R** Thru Hole Right Angle
- L** Thru Hole Left Angle
- H** Thru Hole Straight

### ACTUATOR MARKING

- A**
- B**
- C**
- D**
- E**
- F**
- G**

### PANEL SIZE



X (Panel thickness)	Dimension Y	Dimension Z
0.75 to 1.25 mm	19.20 +0.1/-0 mm	12.90 +0.15/-0 mm
1.25 to 2 mm	19.40 +0.1/-0 mm	12.90 +0.15/-0 mm
2 to 3 mm	19.80 +0.1/-0 mm	12.90 +0.15/-0 mm

## How to order:

RK4

- 1** **POLES:**  
**S** Single Pole
- 2** **SWITCHING:**  
**1** ON - OFF  
**2** ON - ON  
**3** ON - OFF - ON  
**4** MOM - OFF
- 3** **TERMINAL (See above drawings):**  
**Q** 4.8mm TAB, 0.8mm THICK  
**D1** Solder Tag Type 1  
**D2** Solder Tag Type 2  
**D3** Solder Tag Type 3  
**R** Thru Hole Right Angle  
**L** Thru Hole Left Angle  
**H** Thru Hole Straight
- 4** **ACTUATOR:**  
**4** Curve
- 5** **ACTUATOR MARKING:**  
**A** See above drawings  
**B** See above drawings  
**C** See above drawings  
**D** See above drawings  
**E** See above drawings  
**F** See above drawings  
**G** See above drawings
- 6** **BASE COLOR:**  
**A** Black  
**H** Grey  
**B** White
- 7** **ACTUATOR COLOR:**  
**A** Black  
**H** Grey  
**B** White  
**C** Red
- 8** **WATERPROOF COVER:**  
**N** None Cover (Standard)  
**W** With Waterproof Cover

## General Specifications:

### FEATURES

- » Single pole rocker switch up to 20A 125VAC
- » Non illuminated

### MATERIALS

- » Contact Arm: Silver cadmium alloy
- » Terminals: Silver plated copper
- » Spring: Piano wire

### MECHANICAL

- » Temperature Range: -20°C to +125°C

### ELECTRICAL

- » Electrical Life: 10,000 cycles
- » Rating: 20A125VAC, 12A250VAC  
10A125VAC, 6A250VAC  
6A125VAC, 3A250VAC  
6A250VAC  
10(4)A250VAC-T125
- » Initial Contact Resistance: 20mΩ max.
- » Insulation Resistance: 100MΩ min. at 500VDC