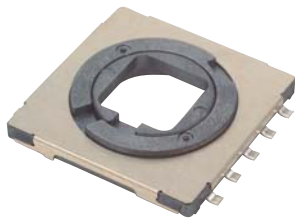


Rotary Switches

20mm SMT Rotary Switch

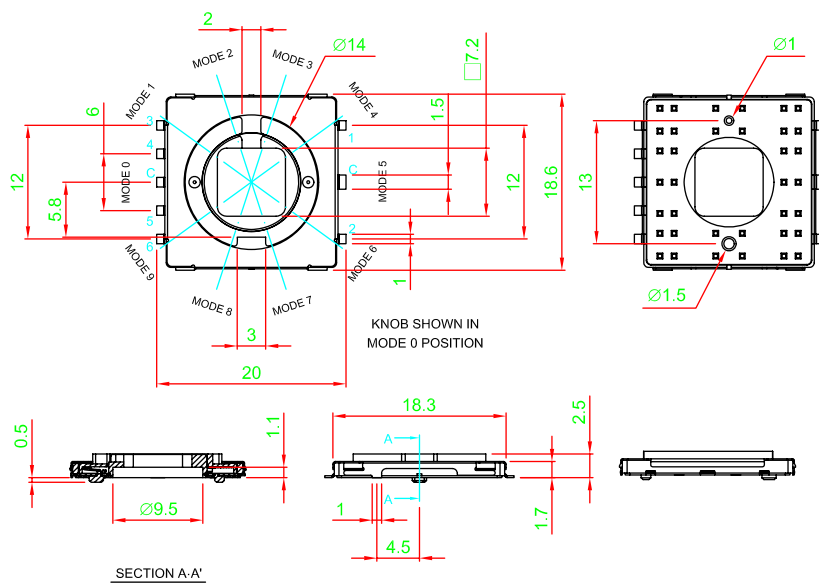
RB20 Series



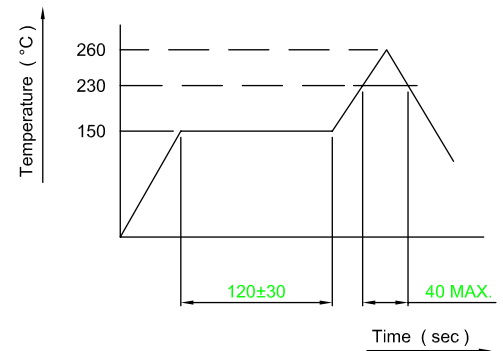
SPECIFICATIONS

SWITCH SPECIFICATIONS	
POLE - POSITION	SMT TYPE , 10 MODE
CONTACT RATING	12 V DC , 50 mA
CONTACT RESISTANCE	200 mΩ max . 5 V DC ; 1 A , by Method of Voltage DROP
INSULATION RESISTANCE	100 MΩ min . 500 V DC for 1 minute
DIELECTRIC STRENGTH	Breakdown is not Allowable ; 100 V AC for 1 Minute
OPERATING FORCE	50gf MAX.
OPERATING LIFE	50,000 cycles
OPERATING TEMPERATURE RANGE	-20°C ~ 70°C

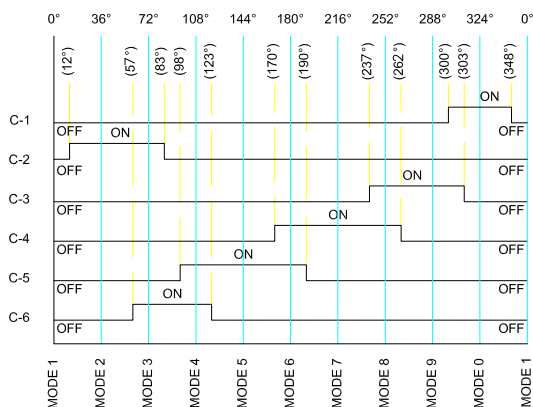
DIMENSIONS



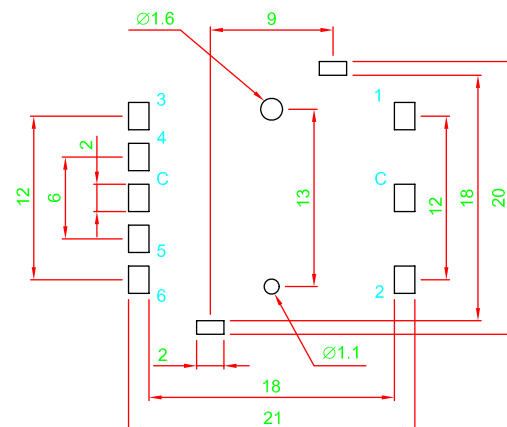
REFLOW SOLDERING



CIRCUIT DIAGRAM



P.C.B. LAYOUT



How to order:

RB20 1 2

1 POLES & CIRCUIT: **2** NUMBER OF MODE:
S10 Surface Mounting Type **10** 10 Mode

MATERIAL, PACKAGING & WEIGHT

- COVER - NS2(C7521R-H)
- ROTOR - LCP + GF
- FRAME - LCP + GF
- TERMINAL - BRASS SILVER PLATING
- TAPE & REEL - 780 pcs / reel
- 1.1 ± 0.05 g / pcs