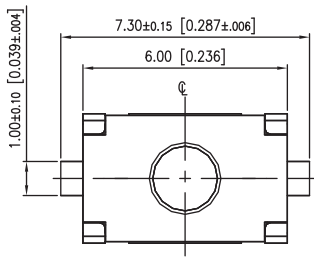


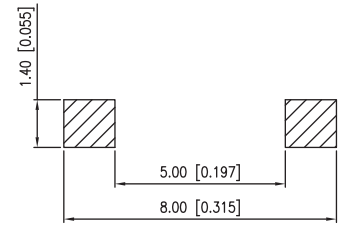
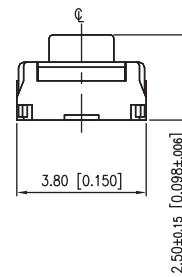
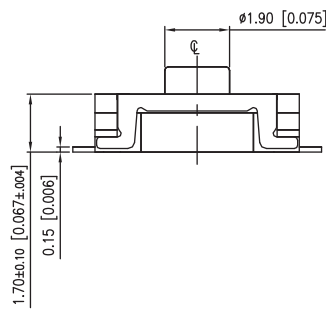
# Tactile Switches

## 3.8x6 mm SMT Tactile Switch

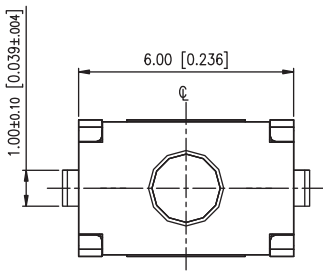
## TP25 Series



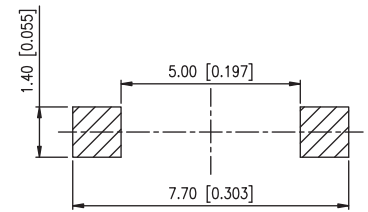
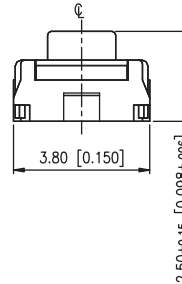
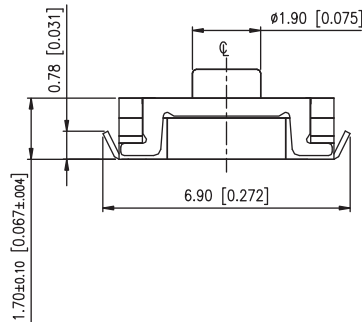
TP25... Flat Terminals



P.C.B. LAYOUT



TP25L... Bending Terminals



P.C.B. LAYOUT

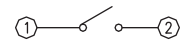
### SPECIFICATIONS:

- > Rating: 25mA 24VDC
- > Contact Resistance: 100 mohm Max.
- > Insulation Resistance: 100 Mohm Min.
- > Dielectric Strength: 300VAC 1 Minute
- > Electrical Life: 200,000 Cycles (by 200gf & 300gf)  
100,000 Cycles (by 450gf)
- > Stroke: 0.30±0.15mm (by 200gf)  
0.35±0.15mm (by 300gf)  
0.45±0.15mm (by 450gf)
- > Operating Temperature: -40°C ~ +85°C

### MATERIALS:

- > Cover: Stainless Steel
- > Stem: Rubber black
- > Dome: Stainless Steel with Silver or Gold plated
- > Base: LCP High-temp Thermoplastic black
- > Terminals: Phosphor Bronze with Silver plated

### CIRCUIT:

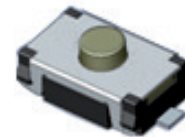


### SOLDERING CONDITIONS:

- > Hand Soldering: 30W 350°C 5 Seconds Max.
- > Reflow Soldering: 260°C 5~10 Seconds Max.

### PACKAGING:

- > Tape & Reel Packaging: 2700 PCs/Reel



UNIT: MM [INCH]  
General Tolerance: ±0.2MM

### HOW TO ORDER:



**1** **TERMINAL TYPE:**  
No Code Flat SMT Terminals (Standard)  
L Bending SMT Terminals

**2** **OPERATING FORCE:**  
K 200±50gf  
C 300±75gf  
J 450±110gf

**3** **DOMES PLATING MATERIAL:**  
AG Silver plated  
AU Gold plated

**4** **SOLDERING:**  
No Code Lead Free solderable (Standard)  
H Halogen-Free

**5** **PACKAGE STYLE:**  
TR Tape & Reel



All specifications are restricted to QA test criteria.  
DRW: D. L. JIN, CHK: D. F. LEE, APP: H. Z. QIU, DC: 2012-12-14